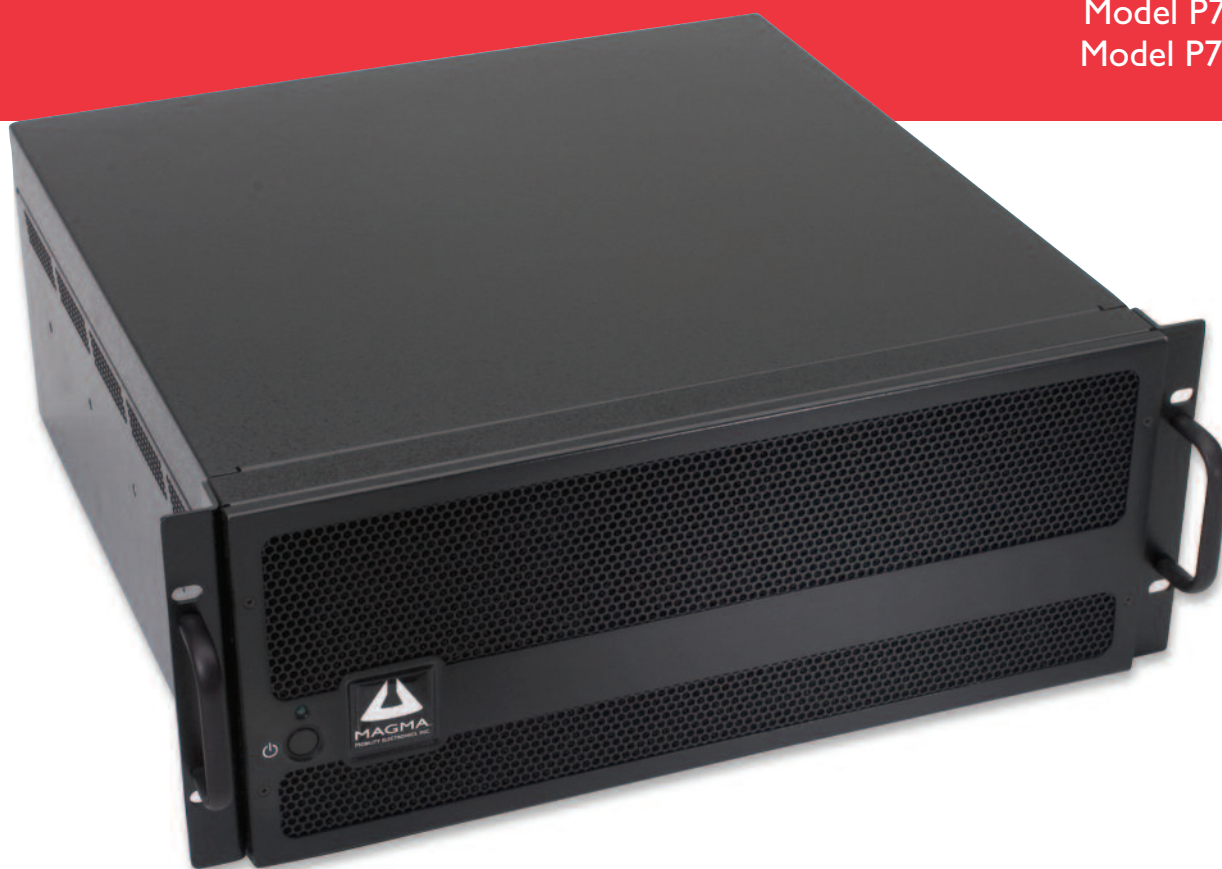




# 7 Slot PCI Expansion System

Model P7R4  
Model P7RR  
Model P7R464  
Model P7RR64



## **Add seven PCI slots and seven drive bays in a separate enclosure**

- Compatible with practically any computer ranging from desktop/server computers to laptops
- Move full-sized power-hungry or high-heat-generating cards outside your host computer
- Attach standard size PCI cards to computers with low-profile slots
- Attach multiple PCI cards to laptops through PCMCIA or ExpressCard
- Each slot supports any 12" or shorter, 5 volt PCI, universal PCI and PCI-X cards
- Rack mountable, 4U chassis

## Prolong your investment

Need to upgrade your server or desktop computer? Got a small footprint computer and full-sized PCI cards? Don't want to lose your investment in pricey PCI cards that don't fit the new computer? Simply need more PCI slots or storage space? Are your full-sized, power-hungry, high-heat-generating PCI cards dragging your computer down? You can install practically any PCI card into the Magma PCI Expansion System and connect it to your new or old server or desktop computer through a variety of Magma host cards. The Magma 7 Slot PCI Expansion System is a 4U, rack mountable chassis that allows you to plug-in up to seven (7) full-sized power-demanding PCI cards and up to seven (7) 3.5" hard drives.

## Increase I/O Capability

There are numerous performance and functionality hungry professionals that simply need more PCI slots than a typical computer provides. Even with the introduction of more robust desktop computers and servers, increased I/O capability is still required. If you have a powerful application that requires the use of several PCI cards, increase the number of PCI slots in your system with a Magma PCI Expansion System.

## Flexible System

The use of computer specific host cards makes using your unique PCI cards and vital data as simple as "Plug & Play" because all you need to do is to connect the Magma PCI Expansion System to the host card for your computer and turn it on. Use the same PCI cards on your laptop as you do on your desktop or server – just add a Magma CardBus or ExpressCard and connect the cable. The auto-switching power supply even allows you to work internationally by simply adding a power cord plug adapter.

Host cards are available for the following systems: (1) Laptop: CardBus or ExpressCard and (2) Desktop/Server: 32 or 64-Bit PCI, or x1 PCI Express.

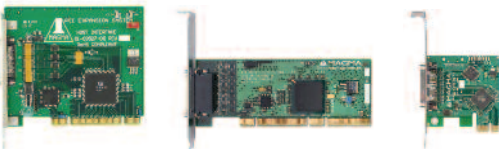
## Familiarity Breeds Success

Setting up your PCI cards and data in one chassis provides you an opportunity to use a consistent hardware configuration – regardless of what type of computer is available. Being able to "hit the ground running" is vital to every successful venture. Being able to use "the same PCI cards," regardless of location also reduces project risks.



## Multiple host interface cards provide easy connection to practically any computer

Desktop and Server Connections (PCI and PCI Express®)



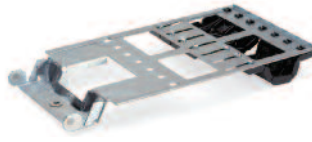
Laptop Connections (CardBus and ExpressCard)



Optional hot-swappable, redundant power supply for high availability applications.



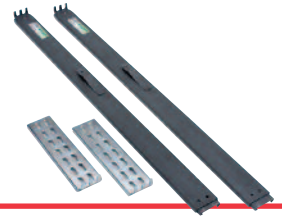
Optional PCI card hold down mechanism prevents cards from being dislodged during transportation



Optional drive cage with cooling fan holds four 3.5" internal disk drives. Maximum of two drive cages per system.



Optional Chassis Trak® rack slides allows entire chassis to be removed and replaced easily from a 4-post rack cabinet.



## Benefits:

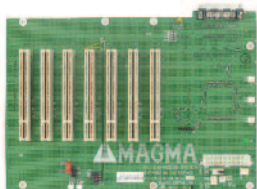
- Increase number of PCI slots without replacing your computer
- Attach full-height PCI cards to computers with low-profile slots
- The only solution for adding multiple PCI cards to mobile computers
- Multiple expansion systems can be connected to a single computer
- Offers a consistent PCI configuration allowing easy host computer upgrades
- Patented technology provides low latency and high through-put
- Proven method to increase PCI capability without losing performance
- Non-enclosed board-sets are available for OEMs and System Integrators to utilize their own enclosure

## Features:

- Easy Plug and Play installation
- PCI and PCI Express® host card provides easy connection to desktop computers and servers
- CardBus and ExpressCard modules provide connection to your favorite laptop computer
- Includes 1-meter expansion cable
- 7 slot PCI backplane (32-bit or 64-bit)
- All slots support full-length or shorter universal and legacy 5 volt only PCI cards
- 500W Power Supply or 400W Hot-Swappable Redundant Power Supply
- Dedicated fan for cooling PCI cards
- Optional PCI card hold down mechanism prevents cards from being dislodged during transportation
- Optional drive cage for mounting up to eight internal drives inside chassis
- Optional Chassis Trak® rack slide kit for rack cabinet installation
- CE certified and FCC Class A verified
- 30 Day Money Back Guarantee

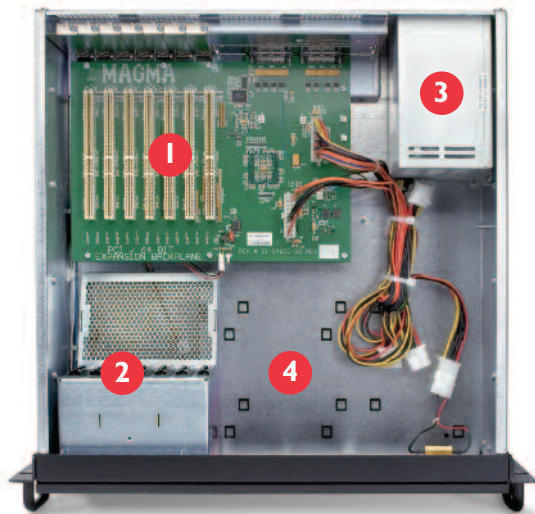
## Non-Enclosed Board Sets for OEMs

### ATX Backplane



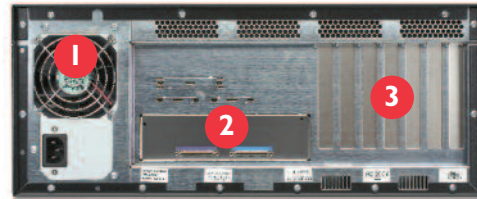
### Host Connections





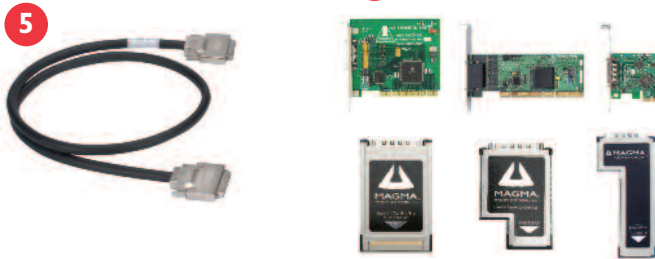
### 7 Slot - Top View

1. Seven slot PCI backplane (64-bit shown)
2. Cooling fan assembly
3. Power supply
4. Space for optional drive bays
5. Expansion cable
6. Host interface cards



### 7 Slot - Rear View

1. 500W power supply (Optional redundant power not shown)
2. Cable connections (one for 32-bit, two for 64-bit)
3. PCI card slot openings



## How to Buy:


All Magma products can be purchased online at [www.magma.com](http://www.magma.com) or through a reseller.

#### Model Names:

P7R4: 7 Slot 32/33 Rack-mount enclosure with 500W PS  
 P7RR: 7 Slot 32/33 Rack-mount enclosure with 400W Redundant PS  
 P7R464: 7 Slot 64/33 Rack-mount enclosure with 500W PS  
 P7RR64: 7 Slot 64/33 Rack-mount enclosure with 400W Redundant PS  
 SUBPCIHIF32LP: Low Profile PCI host card option  
 SUBPEHIFX1: x1 PCI Express® host card option  
 SUBCBHIF: CardBus (PCMCIA) card option

SUBEC54: ExpressCard/54 module option  
 SUBEC34: ExpressCard/34 module option  
 SUBCBL1.5HF: 1.5 meter cable option  
 RDRIVECAGE: Drive cage with fan  
 RCHD7: PCI card hold down kit  
 RSLIDES-X: Chassis Trak® rack slides with extender bracket (18", 24", 26", 28" lengths)

## Specifications:

<b>Backplane</b> 7 PCI slots (32-bit/33MHz or 64-bit/33MHz) PCI Local Bus Specification: Revision 2.3 PCI Bridge Architecture Specification: Revision 1.2	<b>Rack Installation</b> Optional Chassis Trak® rackside kit Optional PCI card hold down kit	<b>MTBF</b> 100,000 hours
<b>Cable</b> 1-meter PCI expansion cable Optional 1.5-meter length	<b>Hard-Drive Support</b> Optional Drive Cage	<b>Regulatory Compliance</b> FCC Class A Verified CE Certified
<b>Interconnect Bandwidth</b> 132 MB/sec (Theoretical Max of PCI 32/33) or 264MB/sec (Theoretical Max. of PCI 64/33)	<b>Chassis Power Supply</b> 550W Power Supply Standard AC Input: 100-240VAC Input Frequency: 50-60HZ Input Current: 10.0A Max DC Output: 550Watts Max +12V 36.0A maximum -12V 3.0A maximum +3.3V 28.0A maximum +5V 36.0A maximum +5VSB 3.0A maximum Total power on +3.3V and 5V must not exceed 200W max.	<b>Supported Operating Systems</b> Windows Vista/XP/2000/Server 2003 Mac OS 10.4.+ Linux Kernel 2.6x+
<b>Enclosure</b> 4U Black Rack-mount 19"W x 7"H x 17.7"D Removable/cleanable air filter 24 lbs or 11.804 kg	<b>400W Redundant Power Supply</b> Optional <i>Contact Magma for specifications</i>	<b>Warranty</b> 30 day money back guarantee 1 year return to factory
<b>System Cooling</b> One large 82.5 CFM backplane fan One fan in power supply	<b>Environmental</b> Ambient Temperature: 0° to 50° C, Storage Temperature: -20° to 60° Relative Humidity: 5% to 85%, non-condensing	 <p><b>Magma</b>          9918 Via Pasar, San Diego          California 92126          Toll Free: 1.800.285.8990          Telephone: 1.858.530.2511          Fax: 1.858.530.2733          E-mail: <a href="mailto:sales@magma.com">sales@magma.com</a></p>
<b>Host Connections and Power Consumption</b> Universal PCI 32/33: 0.63W max; 5V @ 0.125A; Low Profile PCI (64/33): 0.86W max; 3.3V @ 0.25A x1 PCI Express®: 0.69W max; 3.3V @ 0.21A CardBus (PCMCIA): 0.42W max; 3.3V @ 0.125A ExpressCard: 0.81W max; 3.3V @ 0.21A; 1.5V @ 0.08A	<b>A Service Disabled Veteran Owned Small Business</b> ISO9001: 2000 Certified	<p>©2007 Magma. Magma is a trademark of Mission Technology Group, Inc. All other brand names and logos are trademarks or registered trademarks of their respective owners. United States and foreign patents pending. Specifications are subject to change without notice. Protected under one or more of the following US Patents: 5,781,747; 5,941,963; 6,044,215; 6,256,515; 6,070,214; 6,578,101; 6,594,719; 6,088,752; 5,696,667; 5,930,119*.          * Licensed</p>