

ExpressBox 3T

Thunderbolt™ to PCIe® Expansion

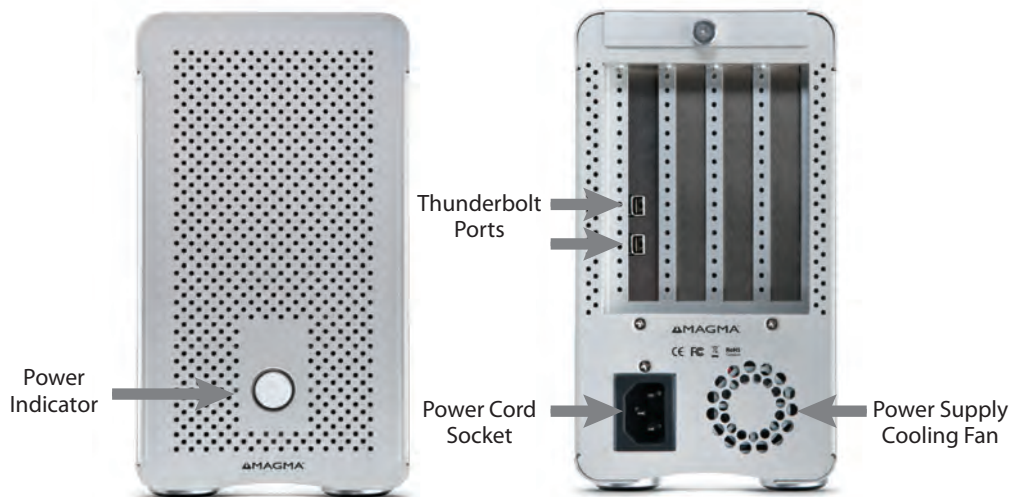
Quick Start Guide

MAGMA

Step 1: Unpack the ExpressBox 3T

The box contains the following items:

- ExpressBox 3T
- Fan Blower
- US Power Cord
- Carry Bag
- Quick Start Guide



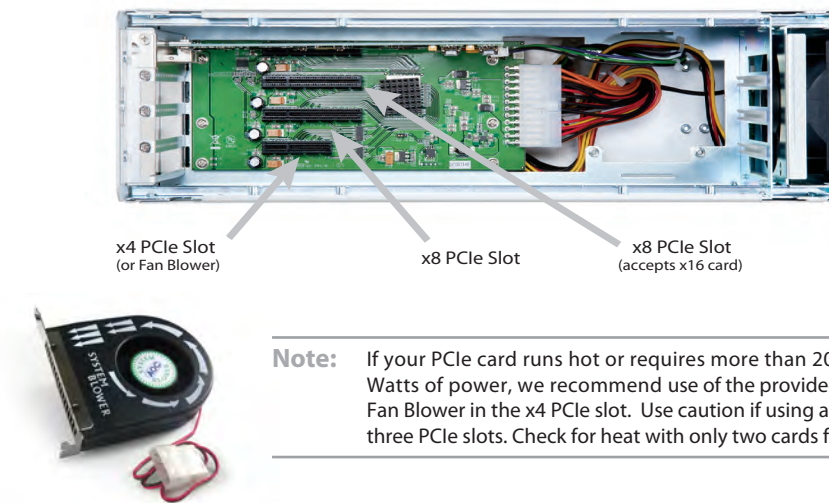
Note: ExpressBox 3T requires a Thunderbolt cable (sold separately)

Step 2: Remove Top Cover

Loosen thumbscrew and remove top cover.



Step 3: Install PCIe Cards and or Blower



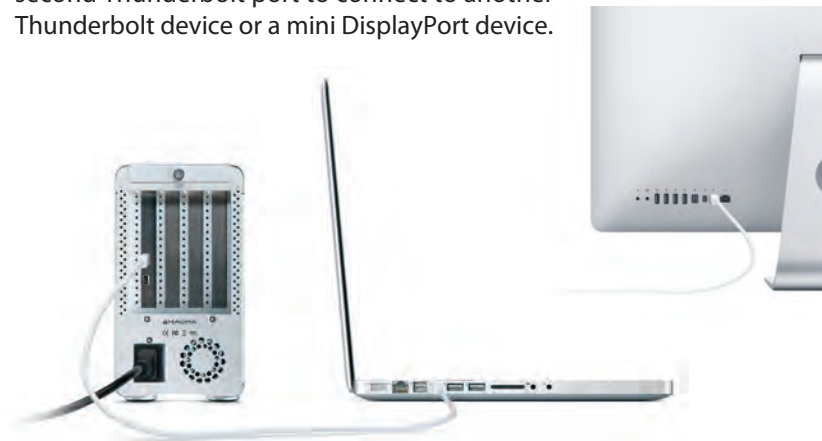
Note: If your PCIe card runs hot or requires more than 20 Watts of power, we recommend use of the provided Fan Blower in the x4 PCIe slot. Use caution if using all three PCIe slots. Check for heat with only two cards first.

Step 4: Connect Power

Attach the power cord to the back of the Magma product and plug into a power source.

Step 5: Connect to Computer

Connect a Thunderbolt cable to one of the ports on the back of Magma product to the Thunderbolt port on your computer. You can use the second Thunderbolt port to connect to another Thunderbolt device or a mini DisplayPort device.



Step 6: Turn on Computer

ExpressBox 3T will automatically turn ON when the computer is turned ON. A BLUE light will shine when the expansion chassis is ON.

ExpressBox 3T will automatically turn OFF when the computer is turned OFF or goes into SLEEP mode.

If either end of the Thunderbolt cable is removed while the system is ON, the expansion chassis will automatically power down.

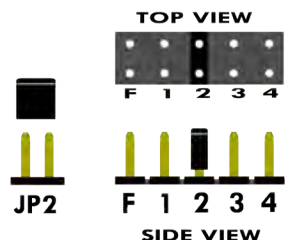


Note: ExpressBox 3T does not have ON/OFF switch. The BLUE LED on the front is an INDICATOR, not a power switch. To turn ON the expansion chassis, simply connect to a Thunderbolt equipped computer.

Fan Speed and Noise Adjustment

For low power or self-cooled cards you can reduce the fan noise by moving the jumper found under the removable cooling fan at the front of the chassis to the slowest speed setting. If the chassis gets hot during use, you should increase the fan speed to provide more cooling.

The Factory Default is setting 2 (medium). The slowest speed is setting 4 and the fastest speed is setting F.



Need More Help?

Download the User Manual at www.ndttech.net
 Pengxiang Support: www.ndttech.net/cn/service/support/
 Call Us: 0731-84668116,85128115,85128116



WARNING

Electrostatic Discharge (ESD) Warning

Electrostatic Discharge (ESD) is the enemy of semiconductor devices. You should always take precautions to eliminate any electrostatic charge from your body and clothing before touching any semiconductor device or card by using an electrostatic wrist strap and/or rubber mat.

FCC Statement

NOTE: This equipment has been tested and found to comply with the limits for a Class A digital device, pursuant to part 15 of the FCC Rules. These limits are designed to provide reasonable protection against harmful interference when the equipment is operated in a commercial environment. This equipment generates, uses, and can radiate radio frequency energy and, if not installed and used in accordance with the instruction manual, may cause harmful interference to radio communications. Operation of this equipment in a residential area is likely to cause harmful interference in which case the user will be required to correct the interference at his own expense. Changes or modifications not expressly approved by the party responsible for compliance could void the user's authority to operate the equipment. This device complies with Part 15 of the FCC Rules. Operation is subject to the following two conditions: (1) this device may not cause harmful interference, and (2) this device must accept any interference received including interference that may cause undesired operation.

Industry Canada

This Class A digital apparatus complies with Canadian ICES-003.
 Cet appareil numérique de la classe A est conforme à la norme NMB-003 du Canada

CE

The product(s) described in this manual complies with all applicable European Union (CE) directives. Magma will not retest or recertify systems or components that have been reconfigured by customers.