



ROBEN-3TS

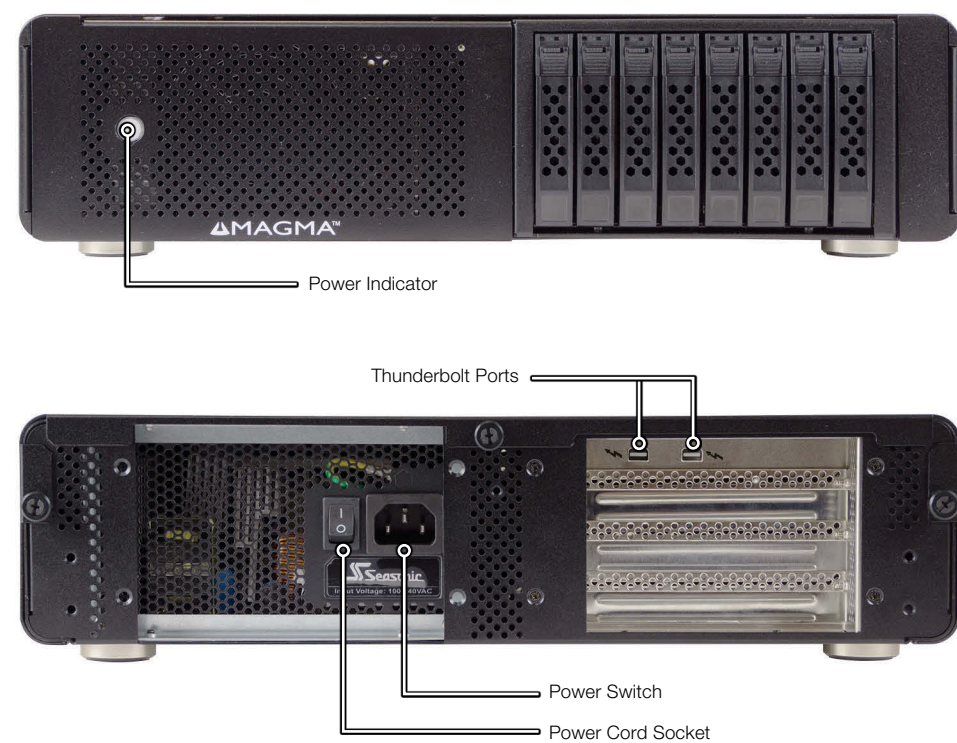
Thunderbolt™ -to-PCIe Expansion

Quick Start Guide

STEP 1: UNPACK THE ROBEN-3TS

The box contains the following items:

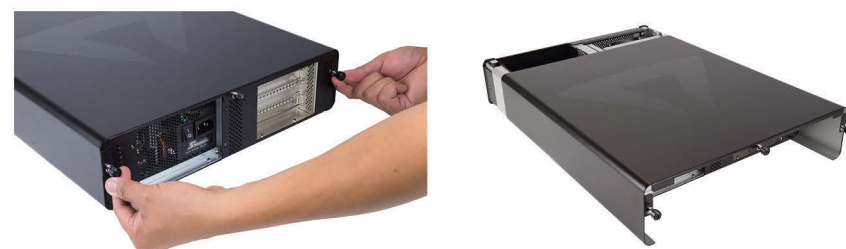
- ROBEN-3TS - Thunderbolt™ PCIe Expansion Chassis
- Rackmount Hardware (See manual for installation.)
- Power cord
- Quick Start Guide



NOTE: ROBEN-3TS requires a Thunderbolt™ cable (sold separately)

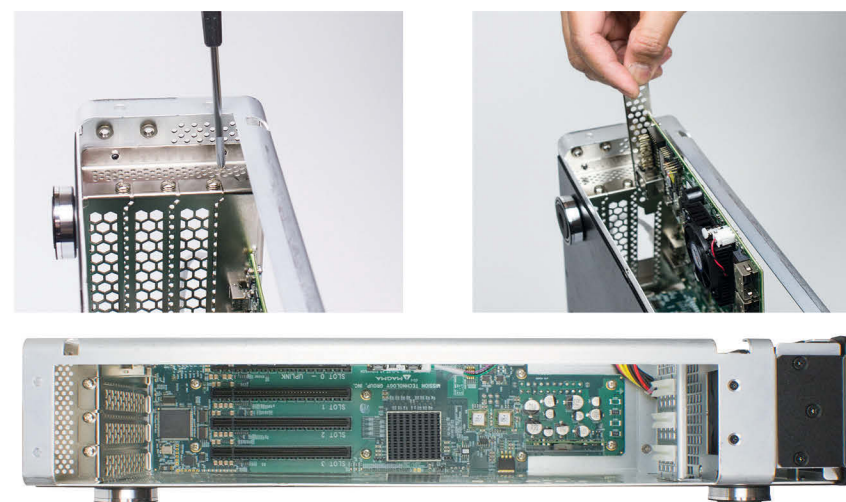
STEP 2: REMOVE COVER

Loosen thumbscrews and remove cover.



STEP 3: INSTALL PCIe CARDS

To utilize the storage bays, install a controller card, and attach the SAS/SATA cables. Refer to the manual for more details.



STEP 4: CONNECT POWER

Attach the power cord to the back of the Magma product and plug into a power source.



STEP 5: CONNECT TO COMPUTER

Connect a Thunderbolt cable to one of the ports on the back of Magma product to the Thunderbolt port on your computer. You can use the second Thunderbolt port to connect to another Thunderbolt device or a mini DisplayPort device.



STEP 6: TURN ON COMPUTER

ROBEN-3TS will automatically turn ON and OFF when the computer is turned ON and OFF. A WHITE light will shine when the expansion chassis is ON.

If either end of the Thunderbolt cable is removed while the system is ON, the expansion chassis will automatically power down.



NOTE: The ROBEN-3 does not have ON/OFF switch. The WHITE LED on the front is an INDICATOR, not a power SWITCH. To turn ON the expansion chassis, connect to a Thunderbolt equipped computer.

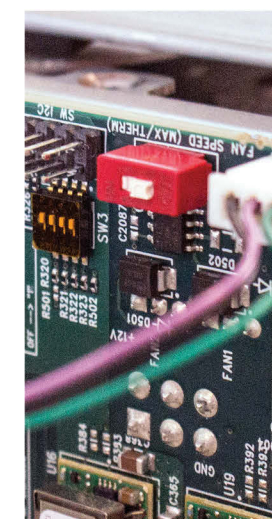
FAN SPEED CONTROL

Some PCI Express cards produce substantial heat and must be cooled properly to eliminate over heating problem. By default, the fan will run at maximum speed when the DIP Switch is set to MAX. If it is set to Thermistor (THERM), the chassis fan speed is controlled by the temperature inside the enclosure. Thermally controlled fan will run at maximum speed when the Thermistor senses temperature at or above an upper limit. Fan will run at minimum speed if the temperature is at or below lower limit.

To set the FAN (speed) locate the red DIP switch SW500 on the expansion board.

MAX = Fan runs at fast mode.

THERM = Fan is set to Thermistor controlled.



NEED MORE HELP?

Download the User Manual
Magma Website: www.magma.com Magma Support: support.magma.com
Call Us: 1-800-285-8990 or 1-858-530-2511



WARNING

Electrostatic Discharge (ESD) Warning

Electrostatic Discharge (ESD) is the enemy of semiconductor devices. You should always take precautions to eliminate any electrostatic charge from your body and clothing before touching any semiconductor device or card by using an electrostatic wrist strap and/or rubber mat.

FCC Statement

NOTE: This equipment has been tested and found to comply with the limits for a Class A digital device, pursuant to part 15 of the FCC Rules. These limits are designed to provide reasonable protection against harmful interference when the equipment is operated in a commercial environment. This equipment generates, uses, and can radiate radio frequency energy and, if not installed and used in accordance with the instruction manual, may cause harmful interference to radio communications. Operation of this equipment in a residential area is likely to cause harmful interference in which case the user will be required to correct the interference at his own expense. Changes or modifications not expressly approved by the party responsible for compliance could void the user's authority to operate the equipment.

This device complies with Part 15 of the FCC Rules. Operation is subject to the following two conditions: (1) this device may not cause harmful interference, and (2) this device must accept any interference received including interference that may cause undesired operation.

Industry Canada

This Class A digital apparatus complies with Canadian ICES-003.
Cet appareil numérique de la classe A est conforme à la norme NMB-003 du Canada

CE

The product(s) described in this manual complies with all applicable European Union (CE) directives. Magma will not retest or recertify systems or components that have been reconfigured by customers.

© 2014 Magma is a trademark of Mission Technology Group, Inc. Thunderbolt and the Thunderbolt logo are trademarks of Intel Corporation in the U.S. and/or other countries.